

SIMPLE T-SHIRT

The trusty t-shirt is a great place to start if you're new to dressmaking, try this project in lightweight jersey for a flattering summer look.

By Wendy Ward



KEY:
SIZES

----- siz

..... siz

--- --- --- siz

xxxxxxx siz

————— siz

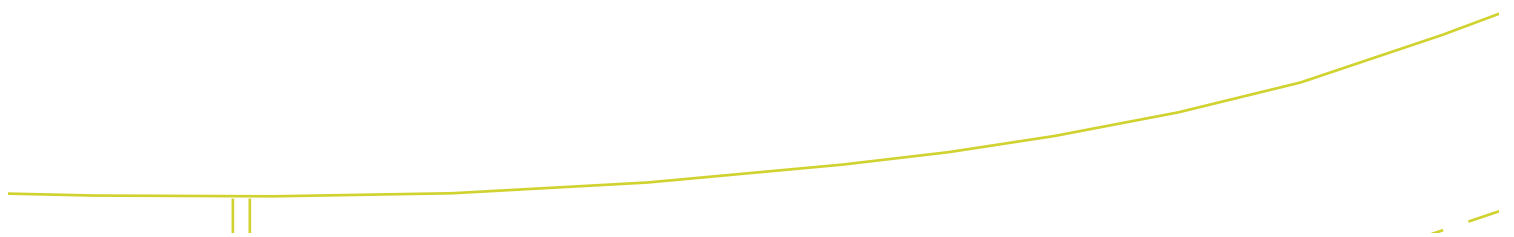


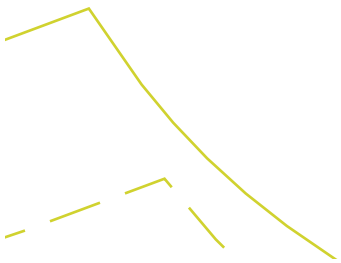
MEASUREMENT CHART

e 1 Follow all of the instructions in the section on Taking Measurements in the Techniques section for exactly where and how
e 2 to measure yourself and how to choose which size to make. See also Techniques: Body Sizes for the sizes used in the book.

e 3 Size	1–2	3	4–5
e 4 Bust	91cm (35¾in)	99cm (39in)	108cm (42½in)
e 5 Waist	80cm (31½in)	88cm (34¾in)	97cm (38in)
Length from centre back neck to hem	59.5cm (23½in)	61cm (24in)	62.5cm (24¾in)

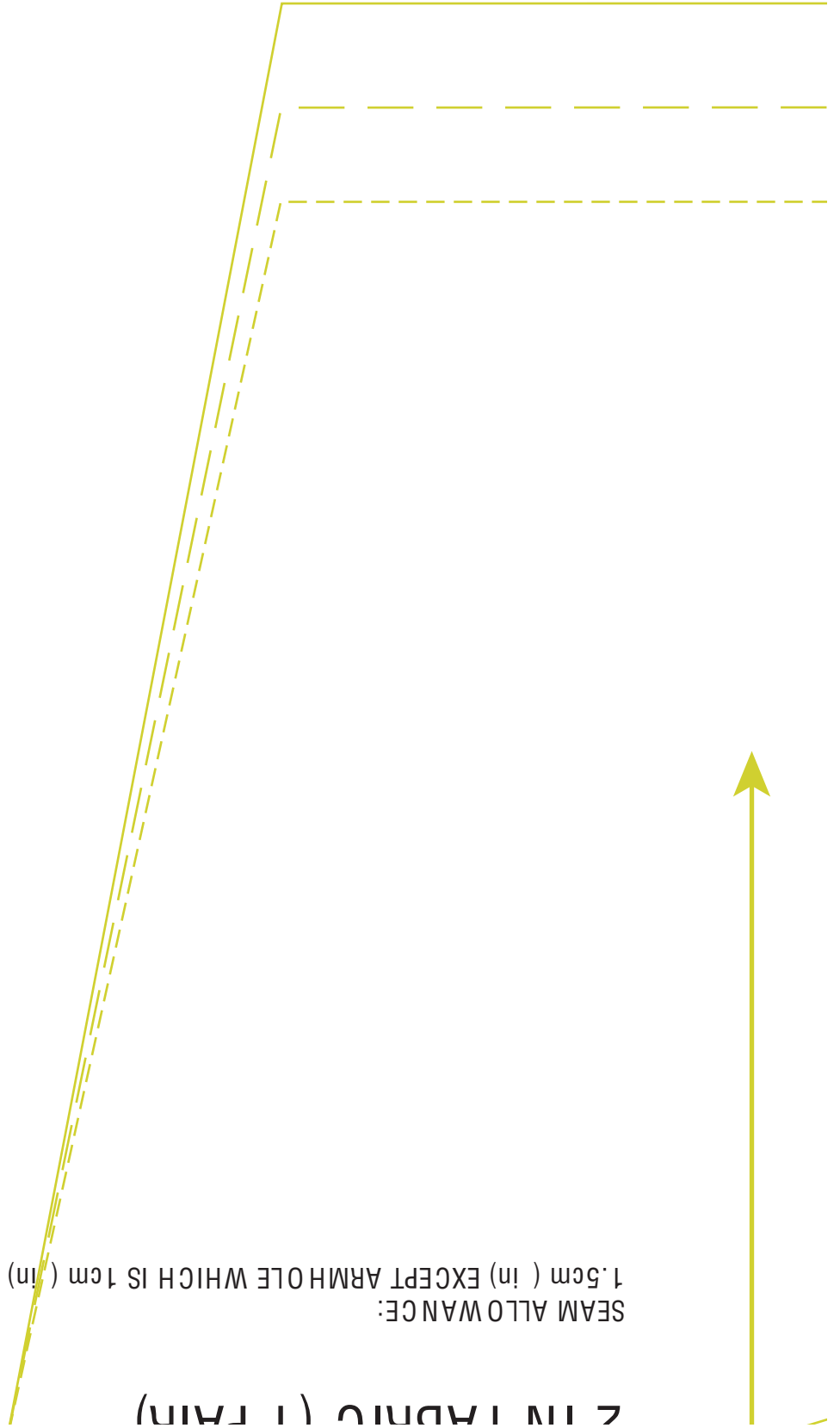


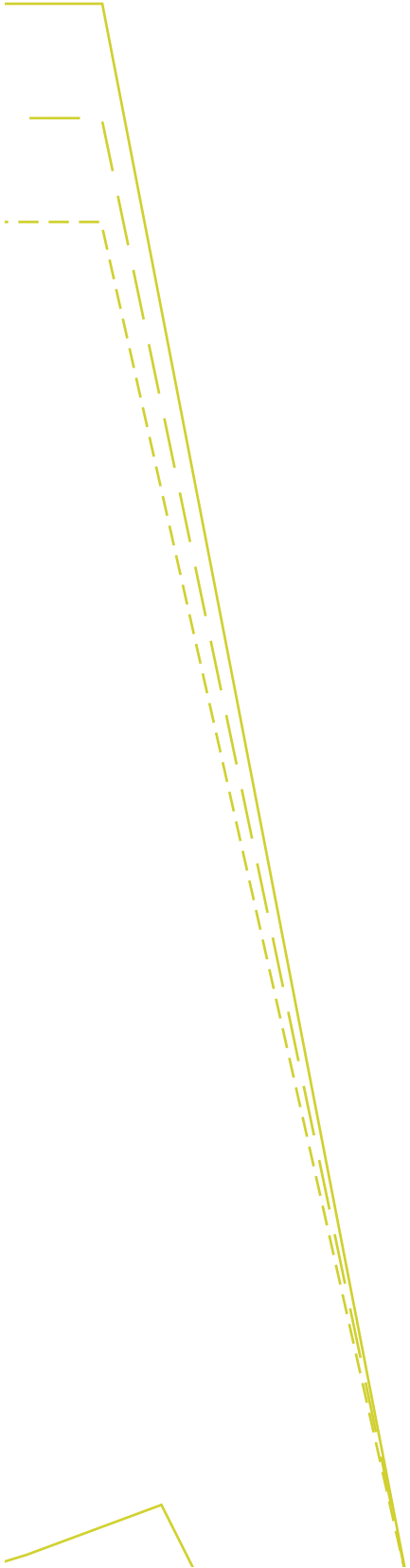


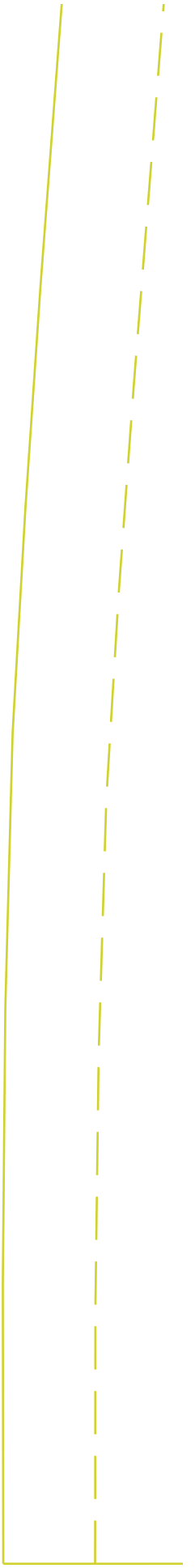


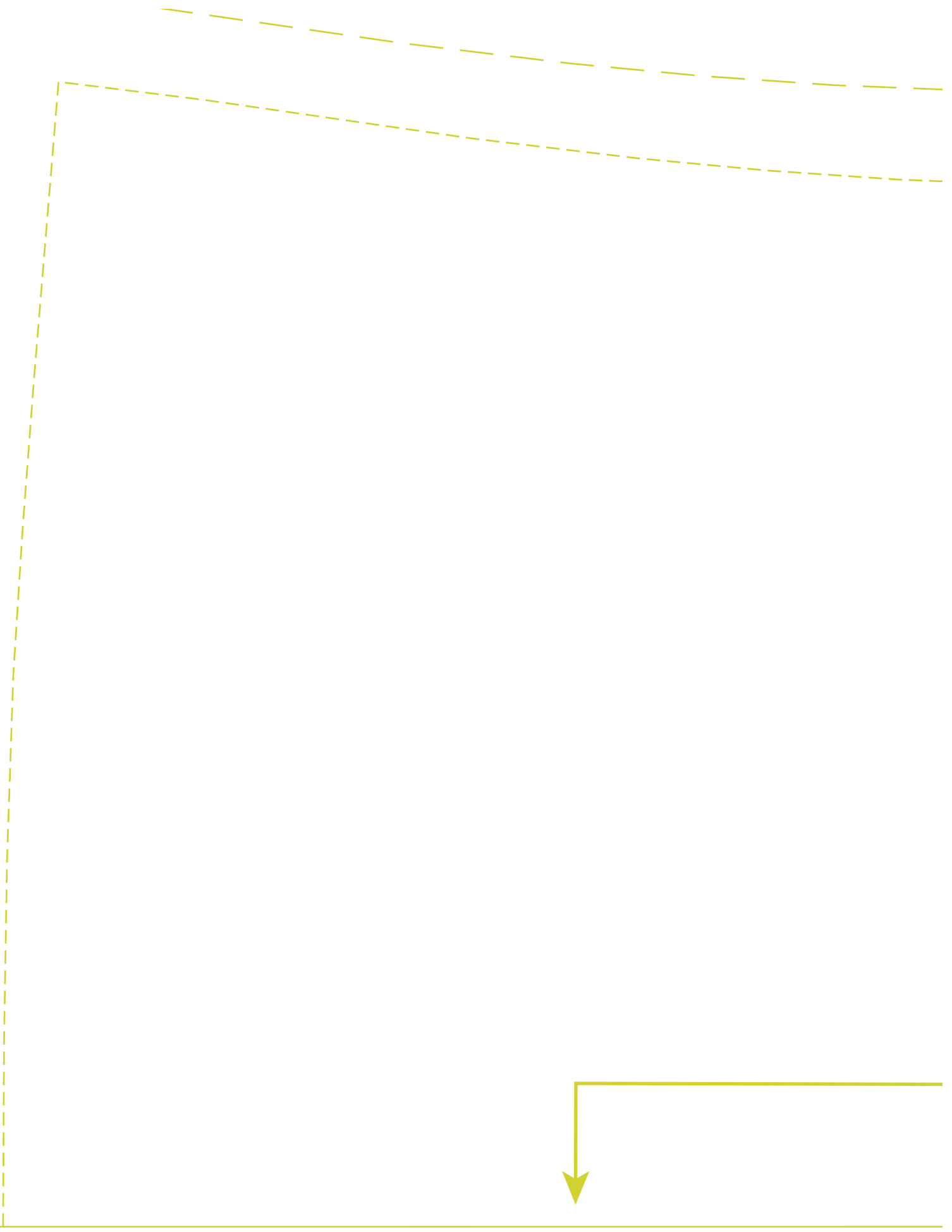
SEAM ALLOWANCE:
1.5cm (in) EXCEPT ARMHOLE WHICH IS 1cm (in)

2 IN FABRIC (1 CM)









**T-SHIRT
FRONT & BACK**

**CUT:
2 ON FOLD OF FABRIC**

SEAM ALLOWANCE:

1.5cm (in) EXCEPT ARMHOLE WHICH IS 1cm (in)

HEM ALLOWANCE:

2cm ($\frac{3}{4}$ in) AT BOTTOM HEM

1.5cm (in) AT NECK EDGE

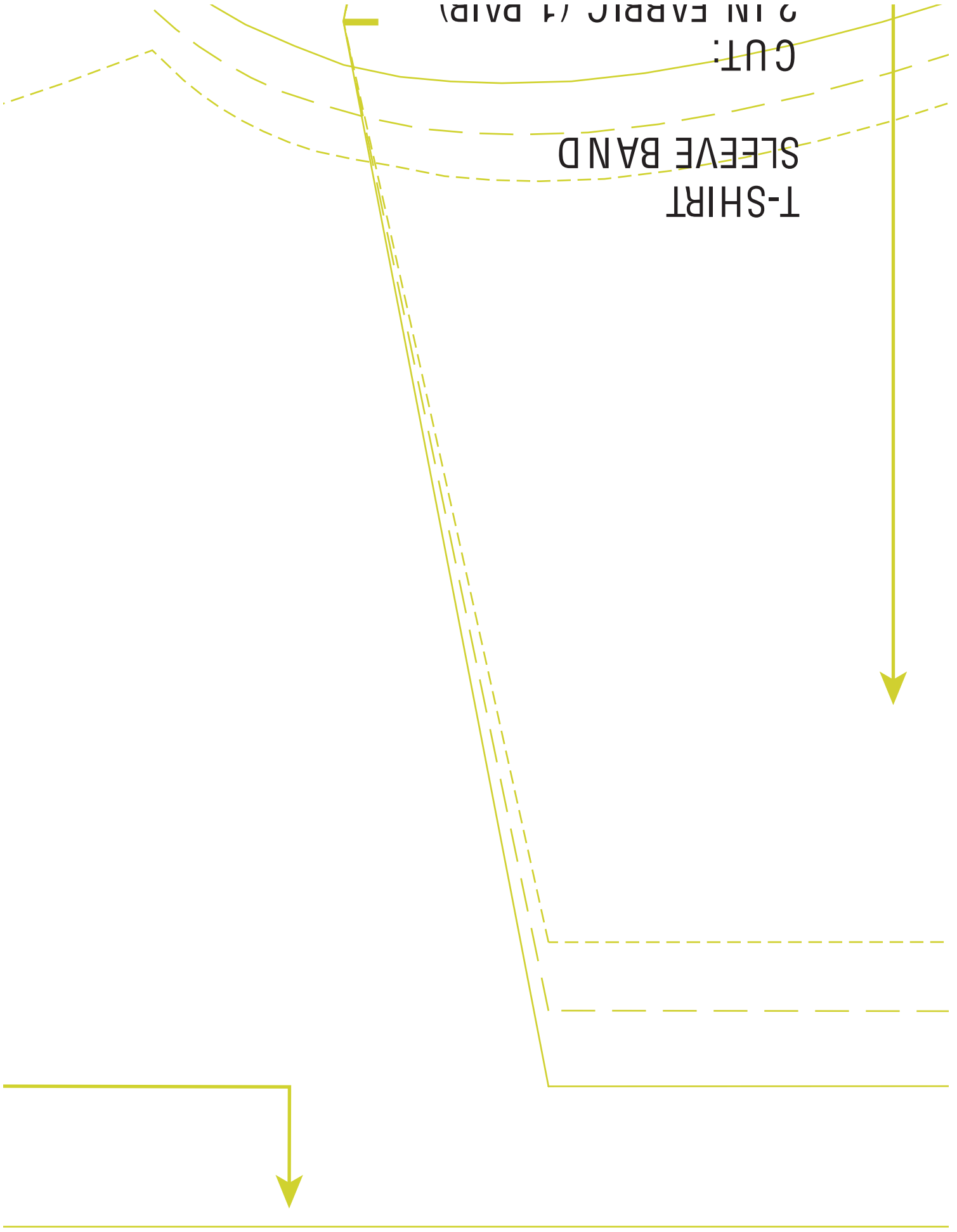
CENTRE FRONT & CENTRE BACK FOLD

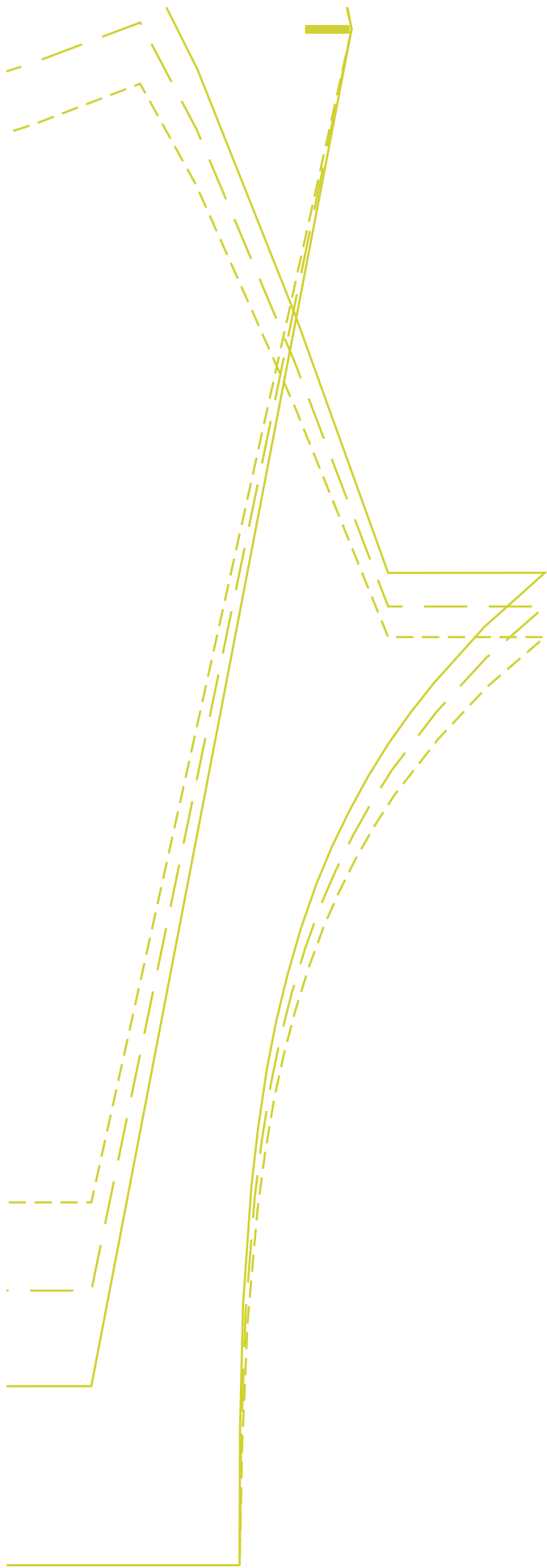
2 IN FABRIC (4 DAIR)

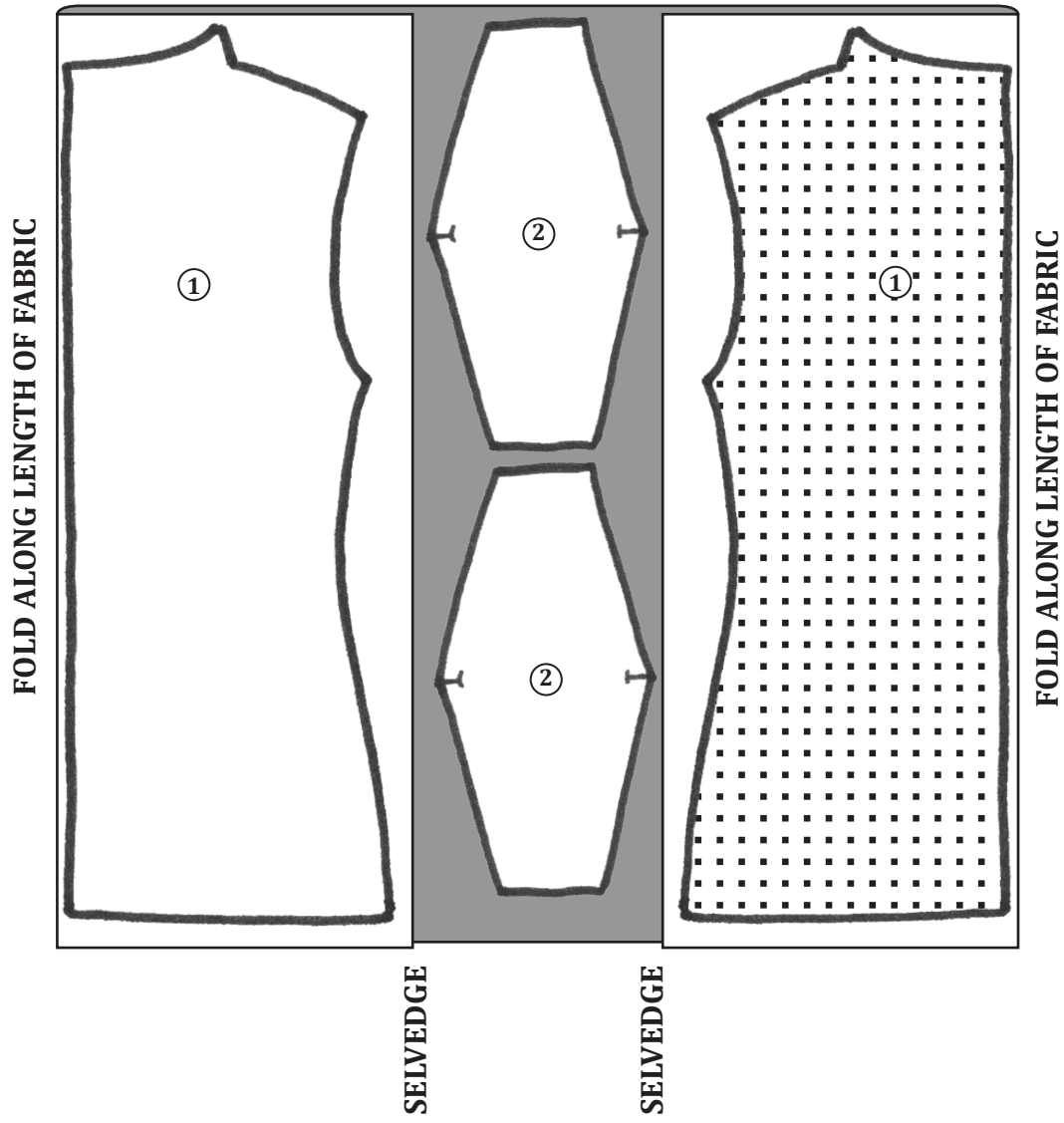
CUT:

SLEEVE BAND

T-SHIRT









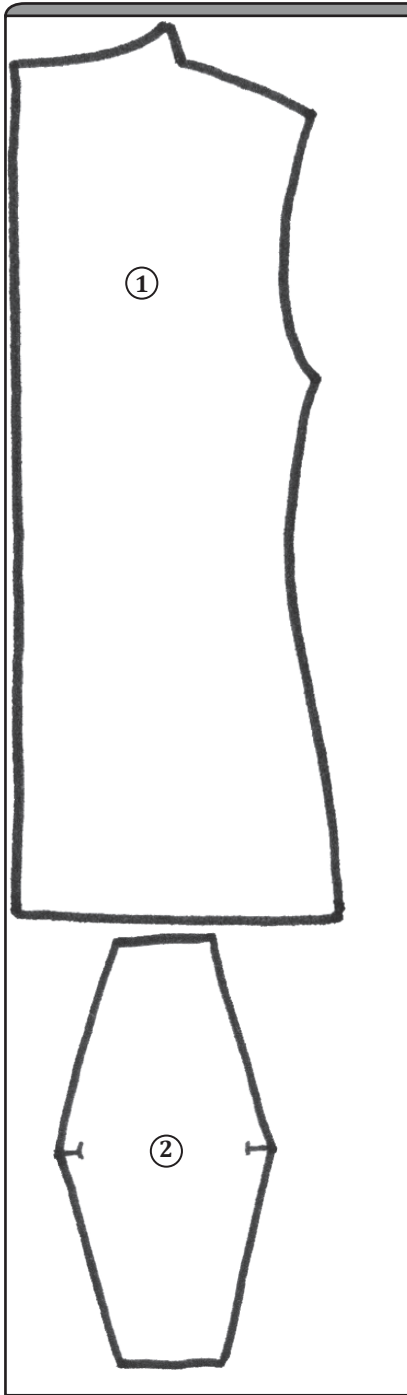


Key to pattern pieces:
 1 - t-shirt front & back
 2 - sleeve band

KEY

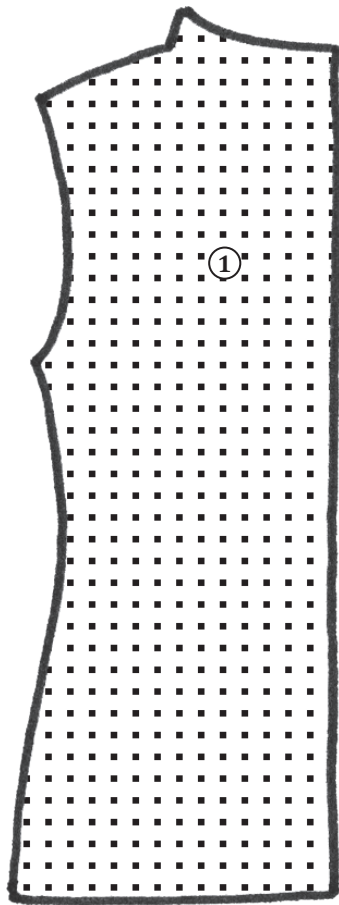
FABRIC		RIGHT SIDE		WRONG SIDE
PATTERN PIECES		PRINTED SIDE UP		PRINTED SIDE DOWN

FOLD ALONG LENGTH OF FABRIC







FOLD ALONG LENGTH OF FABRIC

SELVEDGES



Key to pattern pieces:
1 - t-shirt front & back
2 - sleeve band

KEY

FABRIC	 RIGHT SIDE	 WRONG SIDE
PATTERN PIECES	 PRINTED SIDE UP	 PRINTED SIDE DOWN